



~ Facts ~

Square Feet:	5,861	Taxes:	\$26,805
Lot Size:	2.78 acres	Schools:	Pittsford
Year Built:	1991	Garage:	Four car attached
Bedrooms:	Four	Bathrooms:	Four and two-half

~ Features ~

- œ New professional grade kitchen appliances in 2008
- œ New Trane high efficiency furnace and central air in 2009
- œ Granite kitchen counters and cherry cabinetry
- œ 10' First Floor Ceilings
- œ Solid mahogany front door
- œ Extensive audio/video wiring
- œ Oversized interior trim details
- œ New central vacuum system in 2008
- œ Masonry fireplaces in the family room and living room
- œ Finished lower level with gas fireplace and custom built-in cabinetry
- œ Hardwood floors with walnut inlaid borders in living room and dining room
- œ Library with cherry built-ins/wainscoting and herringbone hardwood floors
- œ 1,200 bottle climate controlled wine cellar with mahogany racks and entry
- œ Extensive landscaping with lawn and landscape irrigation system
- œ UV/solar window tinting in family room, dinette, library, and master bedroom



Jodi Weinberger

585-586-0953

jweinberger@woodstonenet.com

woodstonerealtynet.com



15 Abbey Woods



Once in a lifetime opportunity to own such a spectacular home in Pittsford, NY

Meticulously Maintained ~ Extensively Updated

1st Floor Master Bedroom and Master Bath Suite

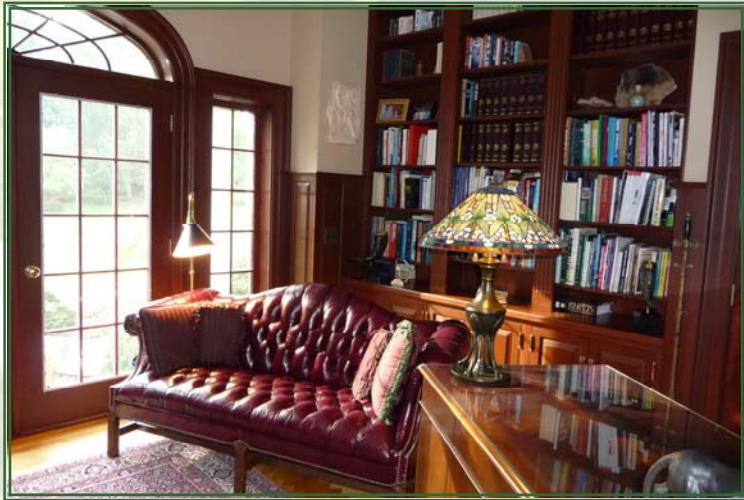
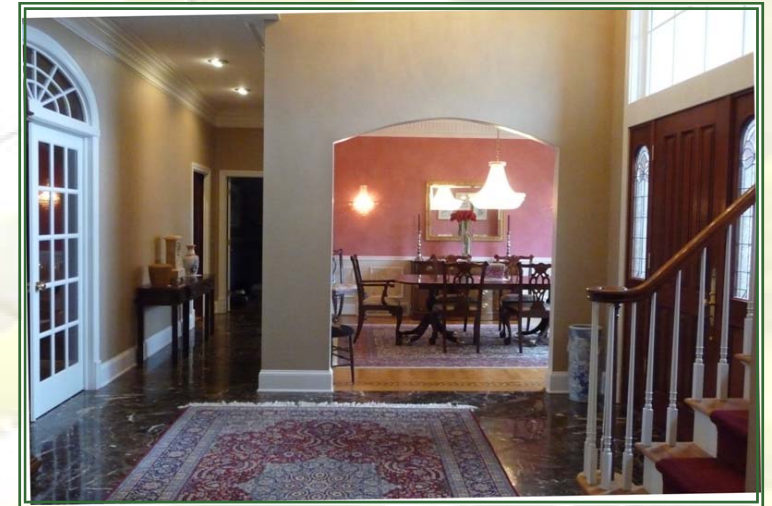
Four Bedrooms ~ Four Full and Two Half Baths

5,861 SF of Total Living Space on Three Levels

Private Drive ~ 2.78 Acre Treed Lot



Newly Updated Kitchen



Incredible Details Throughout